

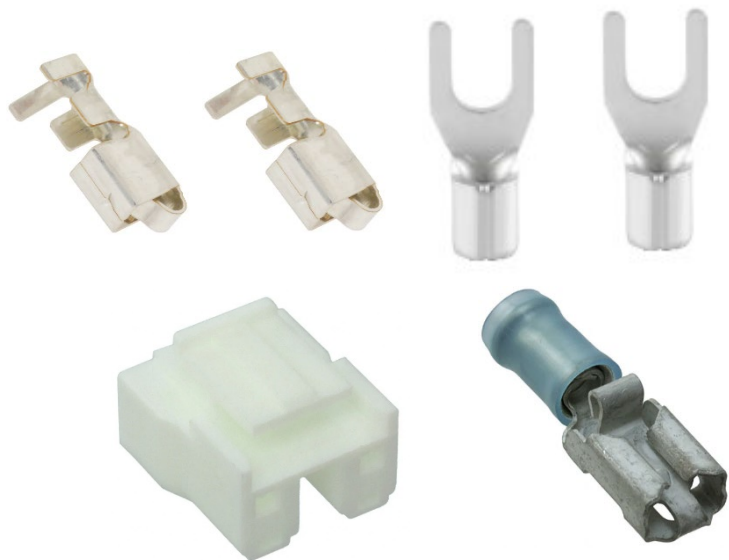
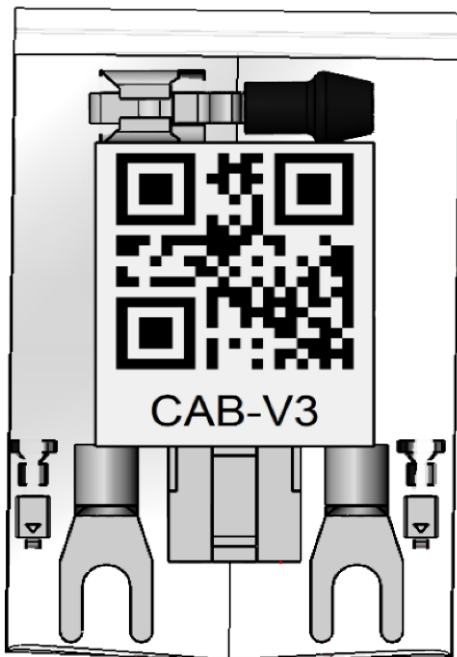
## Cable Set

Order PN

CAB-V3

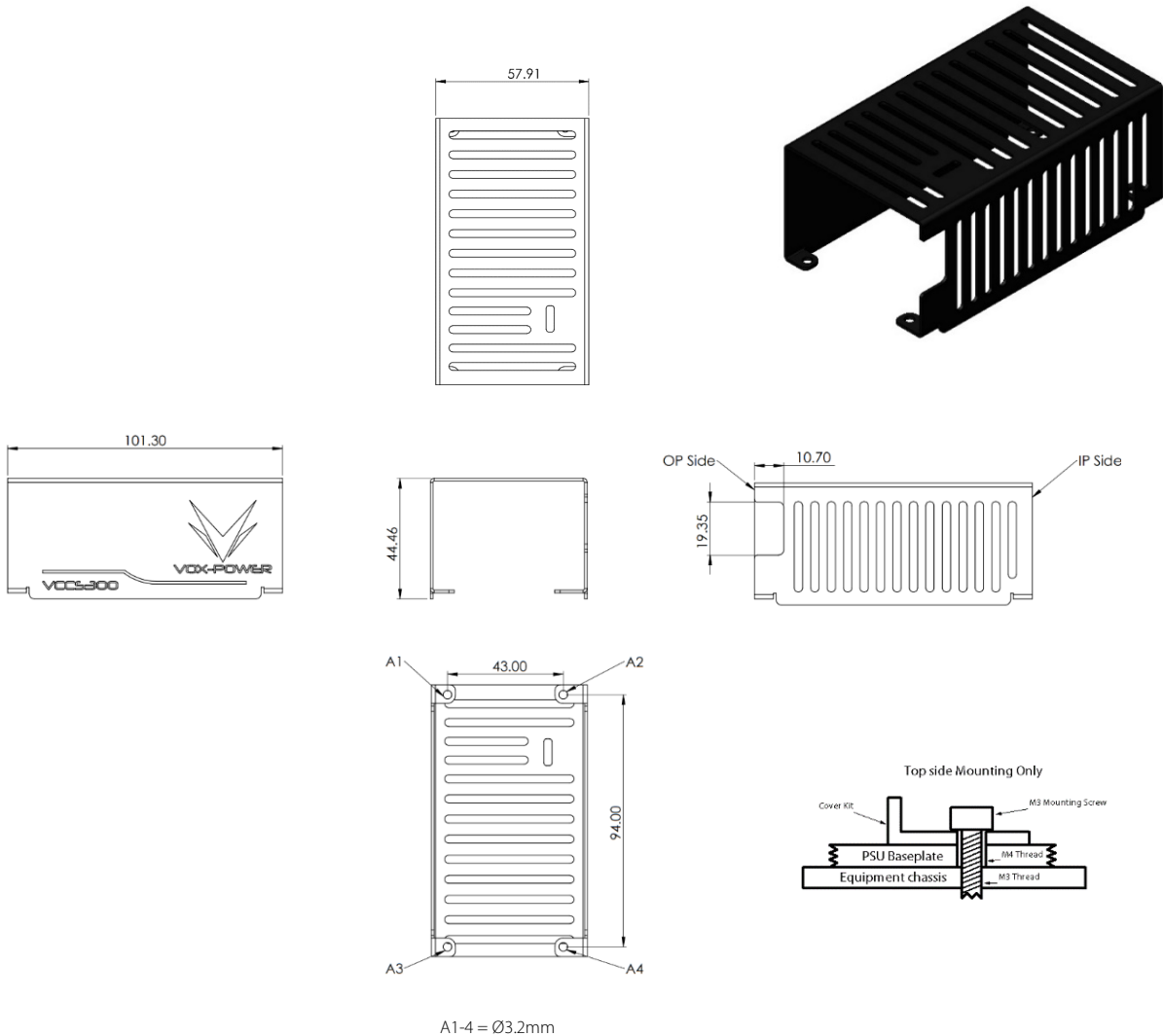
Description

1x Input connector housing,  
2x input connector crimp terminals,  
1x Earth crimp terminal,  
2x output crimp terminals.



# Cover Kit

Order PN	CKIT-V3
Description	Galvanised steel cover, Matt black paint Fits over VCCS300 open frame PSU when VCCS300 is being mounted to customer equipment Notes: Mounting screws not included. Use M3 Hex Socket Head Cap Screw To be used with the VCCS300 series of open frame products only.



DISCLAIMER: The CKIT-V3 cover kit is intended to protect end customer installation/maintenance personnel from electrical shock hazards when using the VCCS300 product series in their end application. The CKIT-V3 accessory does not carry any safety approvals as it is sold as an accessory and should be evaluated & approved in the end customer application.