

## Medical AC/DC power adapter AD-A8 V2 Series 170/175Watts

DOE Level VI & EU ErP Tier 2 Efficiency Compliant

### AC/DC Switching Adapter - Single Output

#### FEATURES

- Medical 60601-1 3.1<sup>st</sup> Edition approval
- 3-pin IEC320-C14 or C6 Class I and 2-pin IEC320-C18 or C8 Class II models available
- Medical safety approved ( 2x MOPP between primary to secondary )  
Suitable for BF application with appropriate system consideration.
- Altitude during operation: Medical up to 5000m.
- $\leq 0.15W$  No Load Input Power
- Touch current less than 100uA
- Rectangular plastic case with IP41 level
- 3 year warranty

#### ELECTRICAL SPECIFICATIONS

- Input range : 90 - 264VAC
- Frequency : 47 - 63Hz
- Power Factor : > 0.95 @115VAC; > 0.90 @230VAC @full load
- Inrush current : < 50A peak @115VAC; < 100A peak @230VAC cold start @25°C
- Input current (rms) : 2.5A @115VAC; 1.3A @230VAC max.
- Efficiency : > 89% @average load, 115/230VAC
- Touch current < 100uA @264Vac
- Maximum output power (Po) : 170/175watts
- Hold-up time : > 10ms typical @full load, 115VAC
- Short Circuit Protection: Auto-recovery
- Over Load Protection: Auto-recovery
- Over Voltage Protection: Shutdown and latch off, AC recycle

#### ENVIRONMENTAL

- Operating temperature : -20 to +60°C (Derate linearly 2.5% per °C from 41 to 60°C)
- Storage temperature : -20°C to +85°C
- Humidity: 0% ~ 95%.
- MTBF : > 400,000 hours at full load and 25°C ambient temperature based on Bellcore TR-332

#### DC OUTPUT & FEATURES

Model	Output Rating		Po	O/P Regulation	Ripple & Noise(Vp-p)	DOE Efficiency	EU ErP
VPM170A2-1Y120HZ_	12V	14.17A	170W	±5%	120mV	VI	Tier 2
VPM175A2-1Y150HZ_	15V	11.67A	175W	±5%	150mV	VI	Tier 2
VPM175A2-1Y190HZ_	19V	9.22A	175W	±5%	190mV	VI	Tier 2
VPM175A2-1Y240HZ_	24V	7.30A	175W	±3%	240mV	VI	Tier 2
VPM175A2-1Y280HZ_	28V	6.25A	175W	±3%	280mV	VI	Tier 2
VPM175A2-1Y360HZ_	36V	4.87A	175W	±3%	360mV	VI	Tier 2
VPM175A2-1Y480HZ_	48V	3.65A	175W	±3%	480mV	VI	Tier 2
VPM175A2-1Y540HZ_	54V	3.25A	175W	±3%	540mV	VI	Tier 2

- Note:**
1. Ripple and noise are measured at oscilloscope 20MHz bandwidth by a 10uF electrolytic capacitor and a 0.1uF ceramic capacitor in parallel at output connector.
  2. AC Inlet Z=1 : Class I, IEC320-C14, Z=2 : Class I, IEC320-C6, Z=3 : Class II, IEC320-C18, Z=4 : Class II, IEC320-C8



#### RoHS Compliant

Dimension : L170 x W85 x H44 mm ( 6.69" x 3.35" x 1.73" )  
Weight : 0.79 kgs ( 1.73 lbs. )

#### SAFETY STANDARDS

UL/cUL 60601-1 3.1<sup>st</sup> Edition  
TUV EN60601-1 3.1<sup>st</sup> Edition  
CB IEC60601-1 3.1<sup>st</sup> Edition  
**Class II versions exclusive:**  
EN60601-1-11 1<sup>st</sup> Edition  
IEC60601-1-11 1<sup>st</sup> Edition

#### EMC STANDARDS

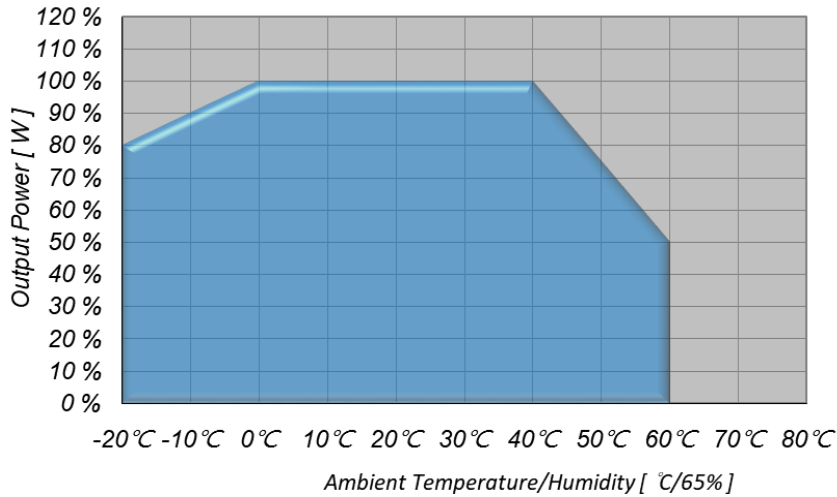
EN60601-1-2 Ed4:2015  
IEC60601-1-2 Ed4:2014  
EN 55011 Class B  
FCC Part 18 Class B  
CE



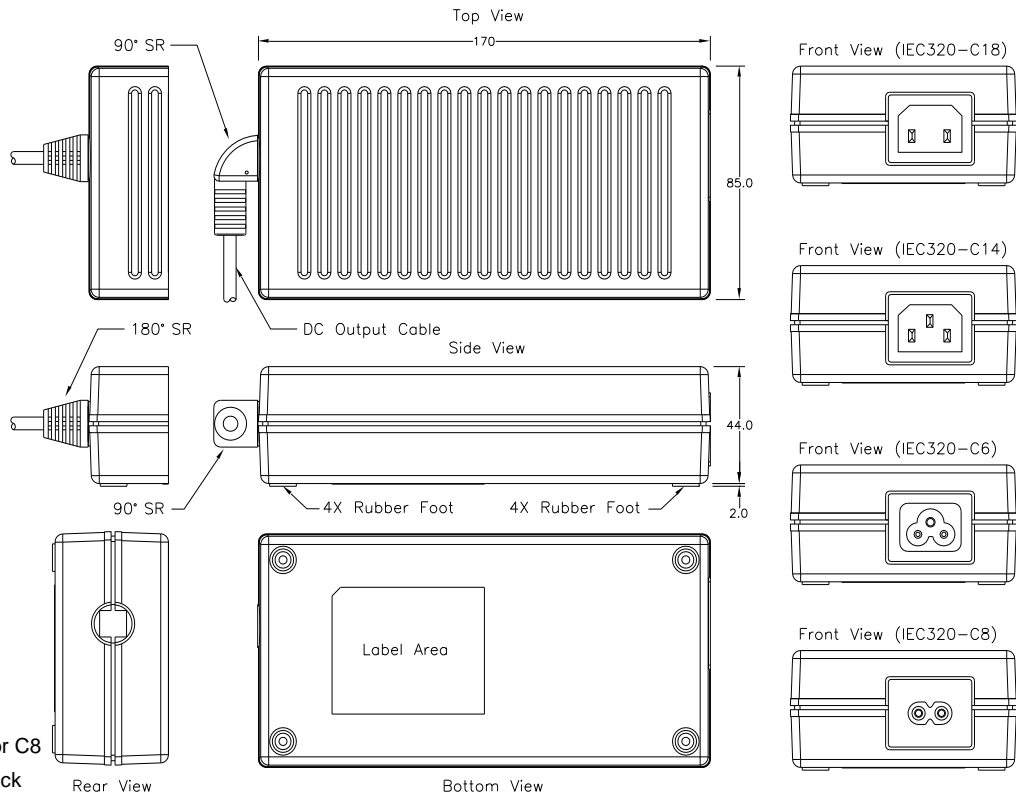
**Medical AC/DC power adapter  
AD-A8 V2 Series 170/175Watts**

DOE Level VI & EU ErP Tier 2 Efficiency Compliant

**AC/DC Switching Adapter - Single Output**



**MECHANICAL SPECIFICATION**

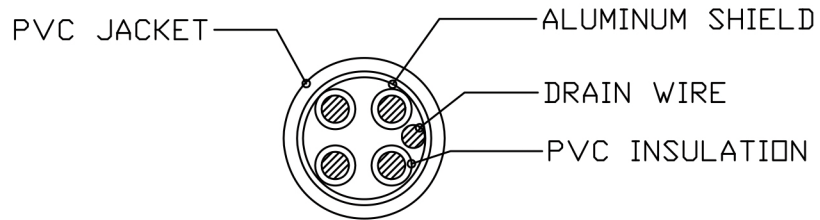


**Note:**

1. AC Inlet : IEC320-C14, C18, C6 or C8
2. Plastic Case Color : Black
3. Tolerance : ± 0.5mm
4. Unit : mm

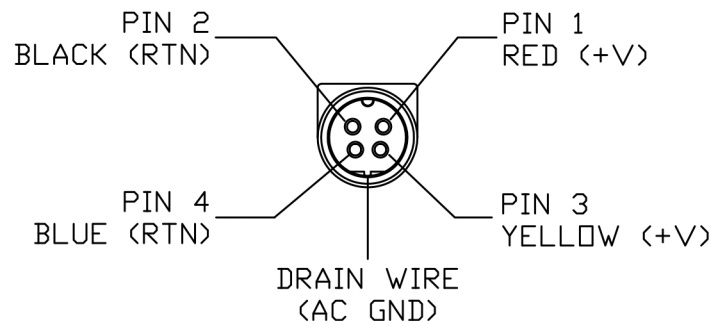
**STANDARD OUTPUT CABLE**

1. AWM 2464 # 16 AWG / 3C + SHIELDING, UL 80°C 300V VW-1, 1050 mm. (12V, 15V & 19V)
2. AWM 2464 # 18 AWG / 3C + SHIELDING, UL 80°C 300V VW-1, 1050 mm. (24V, 28V, 36V, 48V & 54V)
3. Depends on customers requirements.

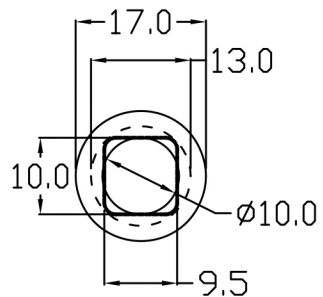
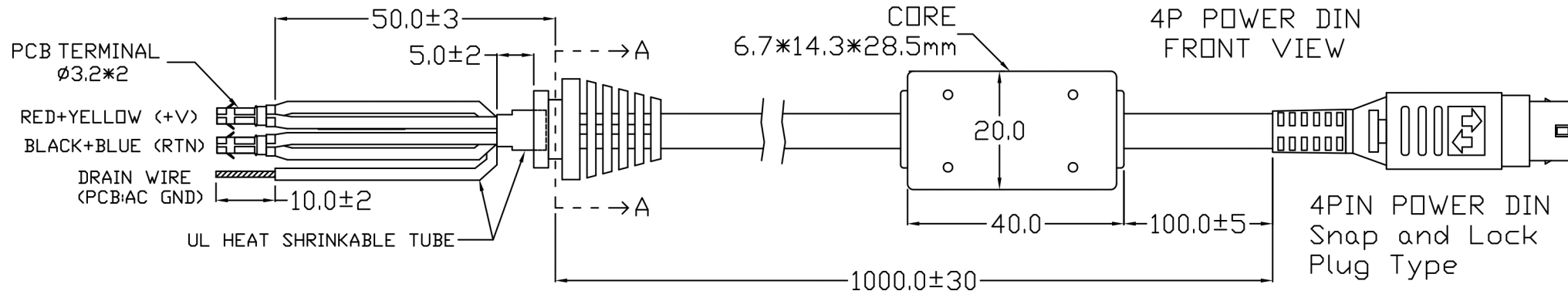


[2464#16AWG 4C+1]  
SECTIONAL DRAWING

Doc. EA-0350

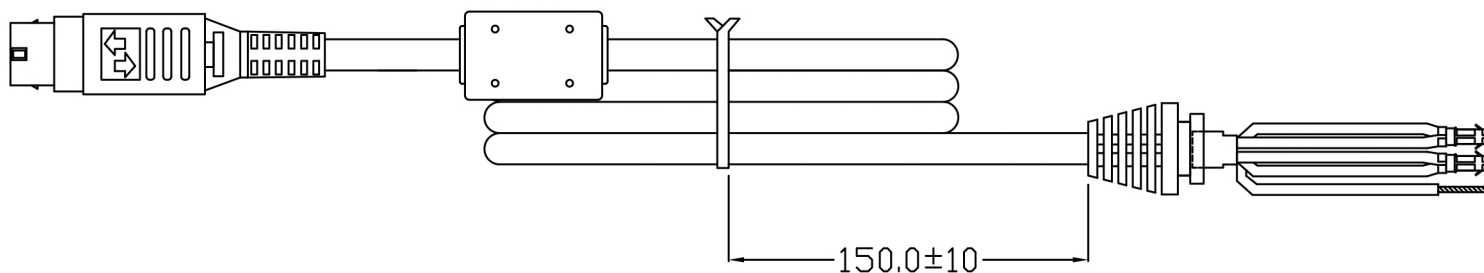


4P POWER DIN  
FRONT VIEW



S.R: AD-A7(A8) SERIES

SECTION A-A



[包裝方式]

	TITLE		DC CORD 1000mm 4C+1(4P POWER DIN)		DESCRIPTION		COMPONENT LIST		REVISIONS	
	MODEL		AD-A8 Medical V2		MATERIAL		1.CABLE : COLOR BLACK UL/CSA 2464 80/90°C 300V 16AWGX4C+DRAIN WIRE+ALUMINUM SHIELD		Rev.A 新版發行	
	DWG NO.		EG-MAP-02-1374A		THICKNESS		2.PVC WIRES : RED/YELLOW/BLACK/BLUE			
	PART NO.		P54400D1251A		FINISH		3.CONNECTOR : 4PIN POWER DIN			
	PREPARE		DRAWING		TOLERANCE		4.末端魚鉤端子3.2ø 5.對應測試頭：4PIN POWER DIN (FEMALE) MDP-002-4PIN (P530600004F0001)			
CHECKED		APPROVED		REV.		DATE		2019/05/17		
Sam				A		2019/05/17				